



Mountfield Road

£1,800 Per Month

Cosway Estates is pleased to offer for rent this lovely split-level two bedroom flat, located in a period house conversion on a quiet residential road in Finchley.

The property comes fully furnished and features an open-plan fitted kitchen/living room; double bedroom; 2nd bedroom/office (single) and a shower room. It's conveniently situated just moments from the shops, restaurants, and cafés of Finchley Central and Temple Fortune, and only a short walk to Finchley Central tube station (Northern Line).

Available last week of July 2025. VIEWINGS HIGHLY ADVISED.

Viewing

Please contact our Mill Hill Office on 02089590011 if you wish to arrange a viewing appointment for this property or require further information.



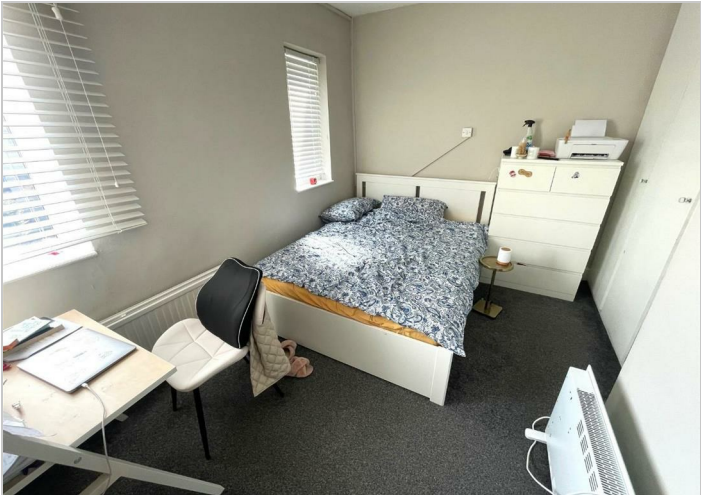
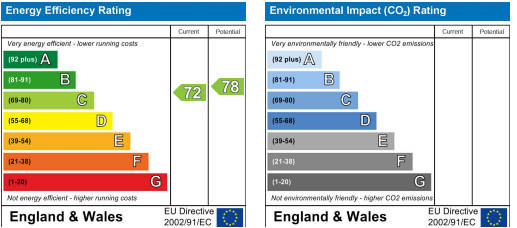
Floor Plan



Area Map



Energy Efficiency Graph



These particulars, whilst believed to be accurate are set out as a general outline only for guidance and do not constitute any part of an offer or contract. Intending purchasers should not rely on them as statements of representation of fact, but must satisfy themselves by inspection or otherwise as to their accuracy. No person in this firms employment has the authority to make or give any representation or warranty in respect of the property.